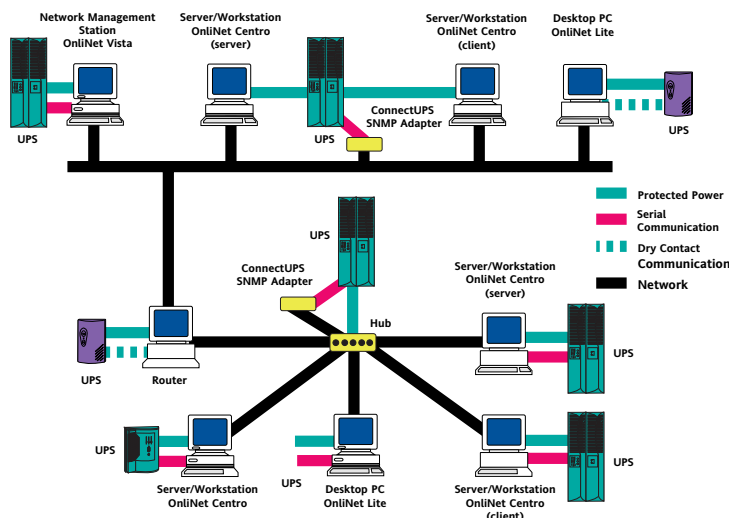


## Features

- ▶ Automatic, unattended shutdown
- ▶ Both server and client shutdown
- ▶ Enhanced scheduled shutdown
- ▶ Lotus Notes Server shutdown (Windows NT)
- ▶ Digital ServerWORKS Plug-In
- ▶ Graphic representation of system and UPS
- ▶ Real-time meter screens
- ▶ Monitor via Vista
- ▶ Event log posted to Vista
- ▶ Battery data
- ▶ Active alarms information
- ▶ Command execution
- ▶ Local and network warnings
- ▶ SNMP trap sending
- ▶ Event log
- ▶ Paging and e-mail capabilities
- ▶ Password protection
- ▶ Control Load Segments

# OnliNet Vista / Centro

## SNMP-Based Shutdown, Management, and Monitoring Solution



The OnliNet product line provides seamless cross-platform and SNMP-based Network Shutdown functionality. In addition to Powerware UPSs, OnliNet also supports other manufacturer's UPSs. From the computer on the desktop to the mission-critical multiprocessor server, OnliNet ensures utmost data integrity throughout the network.

With the complexity of today's networks increasing and power issues becoming more critical to productivity, IT Managers need powerful software solutions to protect business-critical information. OnliNet is the ultimate software package for SNMP monitoring and management of network UPSs. OnliNet is available in three management levels:

### OnliNet Vista

OnliNet Vista is the ultimate remote SNMP-based package for monitoring, configuration, and control of UPSs. OnliNet Vista links and reports information from OnliNet Centro, OnliNet Lite and SNMP network adapters for a single approach to enterprise-wide power management. Through a graphical user interface, system managers can easily select any single UPS or UPS groups on the network and customize a range of user-programmable options: shutdown parameters, notification methods, battery tests, resets, and scheduled shutdowns for all systems on the network.

### OnliNet Centro

OnliNet Centro provides advanced, unattended SNMP-based shutdown of computer systems, locally and across the network. Designed for mission-critical workstations and servers, it protects data in the event of an extended power failure. It also shuts down multiple computers powered from a single UPS. OnliNet Centro includes an event log to help identify and diagnose power problems, as well as advanced notification features to page or e-mail the system manager if an alarm situation occurs.

# OnliNet Vista: SNMP-Based Management Console for All UPSs

## Ideal Solution for System Administrators

OnliNet Vista SNMP power management software is ideal for system administrators, particularly those who have to manage several, or even hundreds of UPSs on the network. It is the ultimate software package for management and monitoring of UPSs, associated software packages, and SNMP network adapter products. It tightly integrates OnliNet Lite, OnliNet Centro, and ConnectUPS SNMP products into one "at-a-glance" NMS type of Management Console.

## One Umbrella for All UPS Brands

OnliNet Vista monitors all Lite and Centro products, regardless of host operating system, as well as

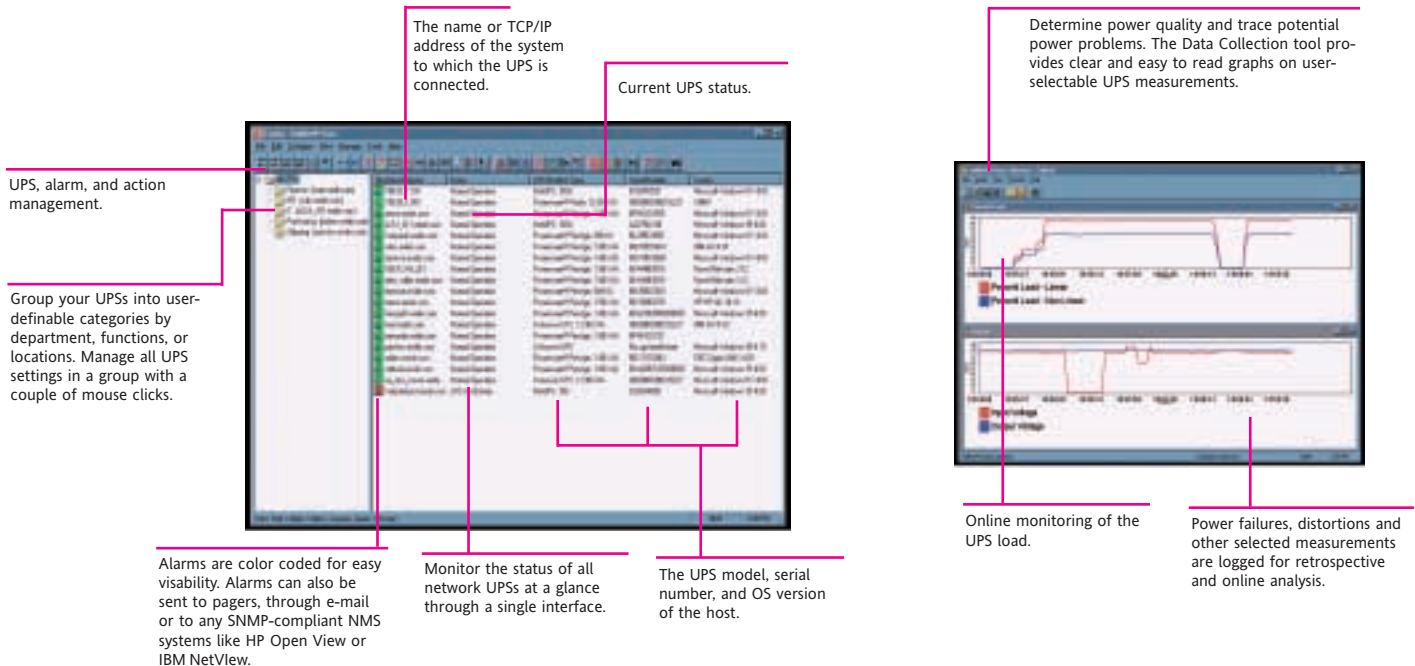
ConnectUPS and any other UPS vendor's standard SNMP (RFC 1628 MIB) adapter products located on the network. Virtually any UPS brand can now be managed through SNMP under a single umbrella of protection.

## Simplifying Complex Tasks

With OnliNet Vista, system administrators can easily perform complex management tasks for one, several, or all UPSs with just a couple of mouse clicks. You may wish to schedule a shutdown for all UPSs in a single department, test battery health of the UPSs in an entire facility, or change the shutdown time for all the UPSs in the IT computer room. With Vista you simply select all the UPSs, folders, or groups you want to manage and perform the task – once.

## Benefits

- ▶ View all network UPSs on a single screen
- ▶ Manage and monitor one, several, or all the UPSs
- ▶ Diagnose chronic power problems through event logs
- ▶ Manage and monitor other UPS brands
- ▶ Examine and analyze power conditions with data logging and graphing capabilities
- ▶ Monitor waveform and THD with oscilloscope application (with Powerware 9 Prestige UPS only)
- ▶ SNMP compliant
- ▶ Audible alarms
- ▶ Send SNMP traps to NMS systems
- ▶ Pager and e-mail notification
- ▶ Command execution



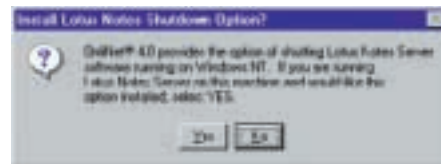
# OnliNet Centro: Advanced SNMP-Based Shutdown for Critical Systems

## Unattended, Automatic Shutdown

OnliNet Centro provides an advanced unattended and automatic shutdown of computer systems, locally, or across the network via the Powerware ConnectUPS SNMP adapter. Designed for mission-critical workstations and servers, it protects data in the event of an extended power failure. It includes an event log to help identify and diagnose power problems, as well as an advanced notification feature to send a page, e-mail, or execute a command. Over 30 alarms or events can be configured to initiate these various types of notification. In addition, all text messages are customizable.

## Enhanced Scheduled Shutdown

An enhanced scheduled shutdown capability allows you to program shutdowns at regular intervals or on an event basis for up to one year in advance. OnliNet Centro can act as either the client or server allowing one or more servers or workstations to be powered from a single UPS with each being shutdown automatically without the need for network connectivity devices (RS-232).



## Lotus Notes Shutdown

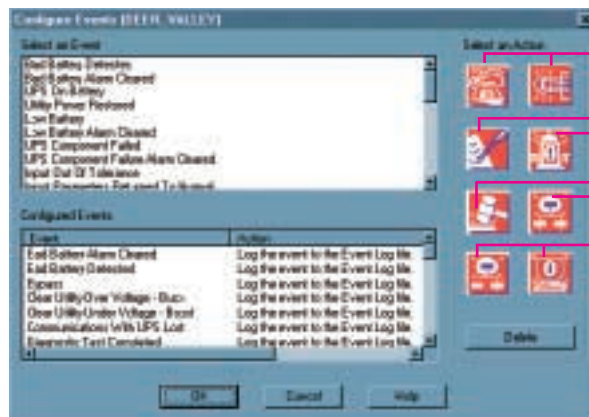
OnliNet Centro can automatically shut down a Lotus Notes Server before shutting down the operating system. During installation, OnliNet Centro detects Lotus Notes installations and prompts the user for the Notes database password. OnliNet Centro then installs the necessary shutdown executables for closing down the Notes server in an orderly fashion.

## Digital ServerWORKS Plug-In

The OnliNet plug-in allows administrators of Digital ServerWORKS to access the information from OnliNet agents running on the network without having to run Vista. The Centro user interface can be started from within ServerWORKS. Once the plug-in is installed, the next time ServerWORKS is started, OnliNet agents will automatically be discovered.

## Benefits

- ▶ Automatic, unattended shutdown
- ▶ Both server and client shutdown
- ▶ Enhanced scheduled shutdown
- ▶ Lotus Notes Server shutdown (Windows NT)
- ▶ Digital ServerWORKS Plug-In
- ▶ Graphic representation of system and UPS
- ▶ Real-time meter screens
- ▶ Monitor via Vista
- ▶ Event log posted to Vista
- ▶ Battery data
- ▶ Active alarms information
- ▶ Command execution
- ▶ Local and network warnings
- ▶ SNMP trap sending
- ▶ Event log
- ▶ Paging and e-mail capabilities
- ▶ Password protection
- ▶ Control Load Segments



# OnliNet Model Selection Guide<sup>1</sup>

Product	Operating System (Platform)	Supported UPS models
OnliNet Vista <sup>2</sup>	Windows 9x, 2000, ME	Any UPS or other manufacturer's UPS connected through OnliNet Centro, or Network/SNMP adapter  Note: OnliNet Vista does not need to be running on a computer powered by a UPS.
	Windows NT 4.0 (Alpha)	
	Windows NT 4.0 (Intel)	
OnliNet Centro <sup>2</sup> 80 kVA)	Compaq Tru64 4.x., 5.x	Powerware 5105, 5119, 5140, 9 Prestige, 9125, 9150, 9330, 9305, 9315 (30 kVA – and any other manufacturer's UPS connected with a standard (RFC1628 MIB) SNMP adapter.
	HP UX 10.20 and 11.0	
	IBM AIX 4.1, 4.2 and 4.3	
	Linux Kernel 2.0 and 2.2 (Redhat 5.x, 6.x)	
	SCO UnixWare 2.1, 7, 7.1	
	SUN Solaris 2.4, 2.5x and 2.6	
	Windows 9x, 2000, ME	
	Windows NT 4.0 (Alpha)	
	Windows NT 4.0 (Intel)	

1. Applicable for OnliNet v. 4.x only. v. 4.x is Y2K compliant. OnliNet features and capabilities may vary depending upon type of UPS. Upgrades available: [www.powerware.com](http://www.powerware.com). OnliNet Vista is compatible with all OnliNet Centro, Lite, and other UPS brand SNMP standard MIB (RFC 1628) installations. 2. Supports ConnectUPS SNMP adapter, any standard (RFC 1628 MIB) SNMP adapter, RS-232 connection types.

Windows is a registered trademark of Microsoft Corporation. OS/2 is a registered trademark of International Business Machines Corporation. Novell and NetWare are registered trademarks of Novell, Inc. Other brand or product names are trademarks or registered trademarks of their respective holders. Due to continuing product improvement programs, specifications are subject to change without notice.

## Invensys Powerware Division

8609 Six Forks Road  
Raleigh, NC 27615 U.S.A.  
Toll Free: 1.800.356.5794  
or 919.872.3020  
Fax: 1.800.753.9433  
[www.powerware.com](http://www.powerware.com)  
SFT21FXA  
Revised 5/02  
Reprint 5/02

Europe  
Finland: 358 94 52 661  
France: 33 1 6012 7400  
Germany: 49 721 961790  
Italy: 39 02 6600661 2  
UK: 44 (0) 1753 608700

Southeast Asia  
Singapore: 65 6861 0377

China and North Asia  
Hong Kong: 852 2745 6682

Japan  
Shinagawa, Tokyo: 81 3 3447 4441

Australia and South Pacific  
Sydney, Australia: 61 29878 5000

Canada  
Toronto, Ontario: 416.798.0112

Brazil  
Sao Paulo, Brazil: 55 11 3845  
4369/ 55 11 3704 3632

Mexico  
Col. Napoles, Mexico:  
525.488.3333

